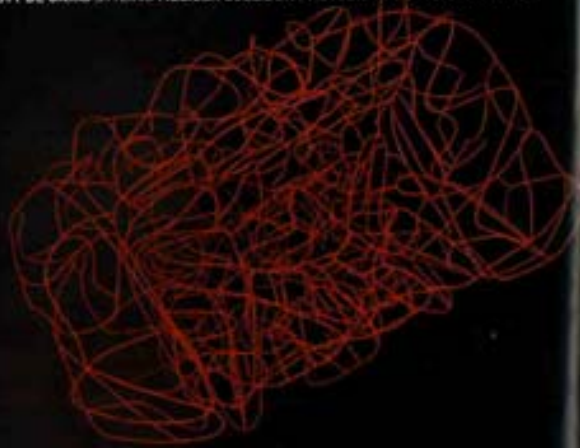


GRAND SCALE

A SYMPATHETIC THREE-YEAR RENOVATION GIVES A SENSE OF INTIMACY TO A PALATIAL FEDERATION HOME OVERLOOKING SYDNEY HARBOUR WORDS KIRSTY DE GARIS STYLING MELISSA COLLISON PHOTOGRAPHS RICHARD POWERS



The formal living area of Louise Green and Warwick Nogue's home (this page) is a rich blend of texture and colour. Rubyk Cosgrove Rugs was supplied with fabric swatches from which to draw colour inspiration for the hand-knitted rug. An off-beat stripe was selected by the bold runner for the stairs in the main entrance (opposite page). The Edra 'Corallo' armchair from Space is made with hand-curved steel wire and finished with coral-coloured epoxy paint. →



The best ideas, designs and concepts usually don't occur overnight. They need time to develop, grow and mature before they are ready to be brought into being.

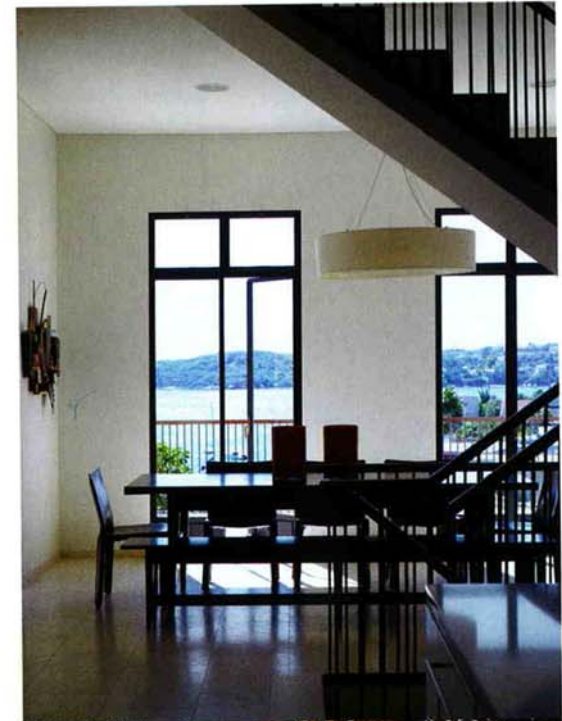
Louise Green, Warwick Negus and their four young children moved into their house in the harbourside Sydney suburb of Point Piper seven years ago, but were in no rush to decide on the best way to approach a redesign. They spent three years in the Federation residence, last renovated in the 1940s, before deciding on an architect and interior designer to work with. "It was crumbling around our ears!" laughs Louise at the memory.

When it came time to transform the building's considerable size into a comfortable family home, colour, texture and scale were of central importance to architect Luigi Roselli – as was being mindful of the building's history. It was constructed in 1899, so Luigi had a solid structure to work with. "We kept its assets," he explains, praising the home's thick walls and cedar joinery, architraves and stairwell in the entry foyer area.

During the two-stage renovation, the kitchen was relocated to the street side of the house, allowing an informal dining area to take in the views. The adjoining balcony is now accessible through foldback steel doors. "We had timber sash windows there which were almost floor-to-ceiling," says Louise. "We turned them into recessed balconies upstairs, except for the balcony outside the master bedroom's ensuite."

The layout needed to be child-friendly, but she and Warwick decided to retain the formal living and dining areas, even if →

[Opposite page] Craftsmen were brought out from England during the home's 1940s renovation to hand-carve the formal dining room's fireplace. The self-portraits are by Archibald Prize winner Craig Ruddy. A modern extension **[above right]** contrasts with the older section of the house. Covering all four floors, its staircase acts as the house's 'backbone' and allows easy indoor/outdoor access, while the limestone flooring is heated from beneath in winter. Louise bought the dining table in London. Folding steel doors separate the patio **[right]** from the kitchen and informal living area, as bamboo shards refract light and offer protection from the sun without blocking it out. The Robert Plumb outdoor furniture is from William Dangar & Associates.





they don't get much day-to-day use. "They're part of the history of the house," explains Louise. "I like them, too, just as I liked the 1940s bathroom upstairs." It also stands unchanged.

To soften the appearance, Luigi went for hard flooring with rugs, a concept the family was comfortable with after years spent living in Hong Kong, Singapore and London. Stylist Melissa Collison from Site Interior Design Studio was enlisted to source furnishings which worked with the expansive, mostly neutral interior spaces. "The aim was to inject colour," she says.

Louise adopted a hands-on approach throughout the redesign, and her taste migrated to warmer tones. "Louise loves orange," says Melissa. "The only blue in her life is in the view from her home and glimpses in two paintings. For the rugs we used shades of tangerine, hot pink, pumpkin and cream."

The family wanted to hold on to their old furniture pieces, collected during a lifetime of living overseas. "I like to keep old pieces," says Louise. "I like layering them and finding ways to update them." She isn't alone in that desire. "The pieces people have are the stories of their lives," says Melissa. "I would never want to sweep through and change all of that."

In the informal dining room, a solid timber table sourced in London stands alongside a sideboard picked up at the Marché aux Puces de St-Ouen flea market in Paris, above which hangs a contemporary artwork. The formal living area features a large Fortuny pendant lamp crowning the space above a Fiam 'Neutra' coffee table in clear, curved glass, with antique Chinese portrait →

Warm orange tones are the order of the day in the entrance (above left). A Maxalto 'Dormeuse' chaise from Space is matched with dyed emu feather-decorated cushions created by Melissa Collison especially for the room. A Thomas Pheasant for Baker Furniture 'Constellation' mirror from Cavit & Co can't help but turn the head of anyone who enters the formal dining room (left). Antique-looking mirrored panels on the foyer's rear wall (opposite page) accentuate its dimensions. The chair is upholstered in Luigi Bevilacqua 'Velluto Tigre' silk/cotton/viscose velvet from Boyac, while the owners applied silver to the chandelier when they moved in, to update it... and decided to leave it there!

